



# Ysgol Gynradd Llanganna Llangan Primary School

Headteacher: Mr James Griffiths

Llangan Primary School • Cowbridge • Vale of Glamorgan • CF35 5DR • Tel & Fax: 01446 772403

Email: [llanganps@valeofglamorgan.gov.uk](mailto:llanganps@valeofglamorgan.gov.uk) Website: [www.llanganschool.co.uk](http://www.llanganschool.co.uk)

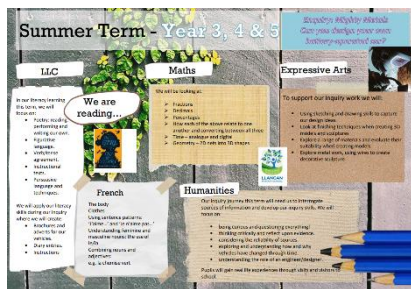
Twitter: @llanganprimary

Monday 29<sup>th</sup> April 2024

Dear Parents/ Carers,

Please find important information about overview for parents, attendance and punctuality.

## Termly Overviews for Parents



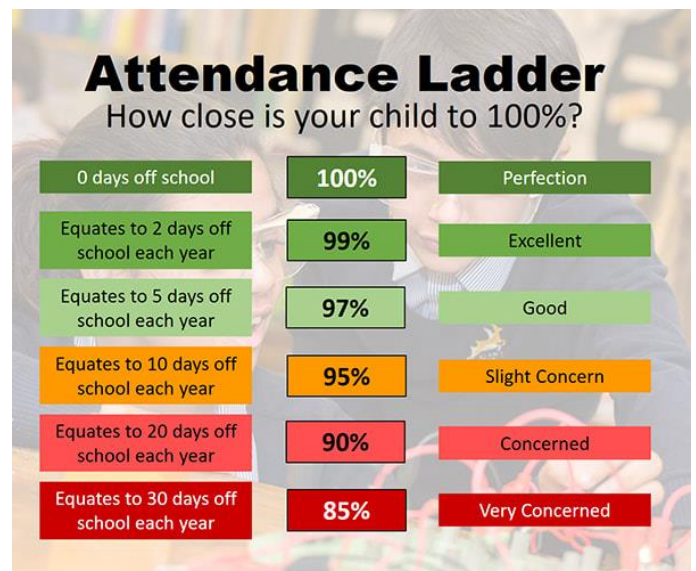
Today, your child will be bringing home a copy of a termly overview for parents. This document shares information about what your child will be learning across all areas of the curriculum. It provides an opportunity for you to engage in discussions about your child's learning with them. We have printed these overviews at the request of the Parents' Forum, but copies can also be found on our

school website under the respective class pages:

<https://www.llanganschool.org.uk/page/?title=Class+Pages&pid=45>

## Pupil Attendance Letters

Improving school attendance is a national priority, and all schools are urged to focus on enhancing pupil attendance. Schools offer numerous opportunities to address a young person's social, emotional, and educational needs, and poor attendance can ultimately limit opportunities for children and young people in the future. The Vale of Glamorgan council has consulted with young people on this matter, and they have played a significant role in designing a new campaign to promote the importance of attendance to families, children, and young people. The campaign aims to highlight the benefits of regular attendance at school. The key messages are "Strong Attendance for a Bright Future" and #MissSchool#MissOut.



Every school day counts, and missed days accumulate to a significant loss of learning: -

The Welsh Government and the Local Authority now classify a learner as persistently absent from school if their attendance level falls below 90%, and this is being monitored by the Local Authority.

**Please note that parents of pupils with attendance below 90% will receive a letter from me, indicating their child’s current attendance and the potential impact on their learning.**

The table below illustrates the impact of low attendance on hours of lost learning.  
Attendance Percentage School Days Missed per Year Hours of Lost Learning per Year:

Attendance Percentage	School days missed per year	Hours of lost learning per year
90%	19 Days	123 Hours
85%	29 Days	188 Hours
80%	38 Days	247 Hours
75%	47 Days	305 Hours

As a school, we highly value the strong relationship we have with our families, and we are committed to working with you to improve pupil attendance at Llangan School.

### Punctuality

At Llangan School, our school day commences at 8:55 am. Your child may enter the premises as part of the soft start provision, allowing them to begin engaging in learning activities before teachers take the register at 8:55 am. All children must be present in school by this time. Staff will not remain in the car park after 8:55 am as they need to proceed with teaching duties. If you arrive after this time, please proceed to the top school gate and inform Mrs. Hale (our School Administrative Officer) of the reason for your child’s late arrival. Additionally, please note that we commence our mathematics lessons at 9:05 am in all classes. Persistent lateness can result in your child missing crucial learning opportunities, which may adversely affect their academic progress and confidence. This also disrupts lesson time for the teachers and the rest of the class.

Thank you for your continued support.

Best wishes,

Mr Griffiths

Headteacher

